

Ōtara Waterways & Lake Trust

Starting at the top of Redoubt Road, and running through Flatbush, Ormiston and Ōtara there are 196km of creeks and streams part of the Ōtara catchment. Built over and neglected, they were once filled with fish and used for drinking, food, transport, portage and recreation. Each of these numerous tributaries flows into Ōtara Lake, a man-made tidal arm of the Tamaki estuary, and they all need our care.

Inspired by a vision to restore not only the mauri (life force) of this waterway system and lake but also the connection and pride the community has with those waterways, the Ōtara Waterways & Lake Project will restore water quality for the Ōtara Waterways and Lake, within this generation.

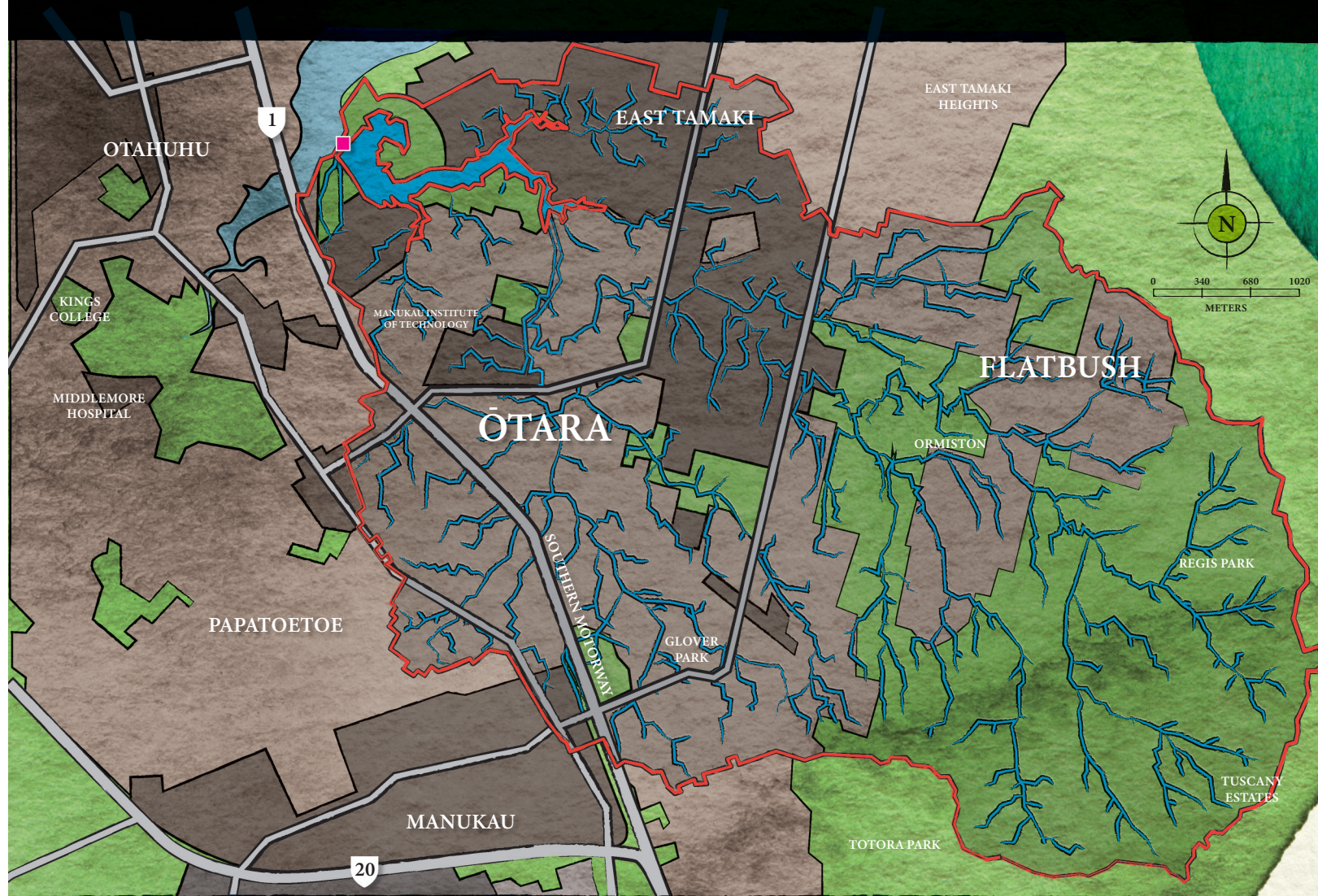
"When the lake, waterways and wildlife flourish, the people flourish."

Everyone working together

The Ōtara Waterways and Lake Trust brings together the strengths and commitment of around 35 organisations and the communities of Ōtara and Howick. Its 2016 Strategic Plan details key objectives related to social, cultural, economic and environmental well-being, with a strong base in science and locally meaningful story-telling.

Its work to restore the mauri of Ōtara waterways and lake focuses on the primary issues of poor water quality: sediment, contaminants, water sensitive design and waste water overflows, litter and pest, plants and animals. In hand with this is the work the Trust is undertaking to enhance the connection and pride people have to the waterways.

Te mauri o te rangi
Te mauri o te whenua
Te mauri ora o Tara



Streams and creeks

Weir

Ōtara Creek/Flat Bush catchment

Condensed housing

Industrial and commercial

Ōtara Lake



Ōtara Waterways and Lake Trust
Building relationships with stakeholders and the community for ongoing and sustained action for the waterways.

Creek Clean Ups

An army of volunteers can achieve a great deal in a short space of time, as well as bringing neighbours and communities together.



Neat Streets

Clean up days help to boost community pride and engagement, and reduce the incidences of illegal dumping and littering entering the waterways.



Litter Action Plan

Working in collaboration with other community organisations to tackle the issue of litter and illegal dumping in Ōtara.



Riparian Planting

Planting – and continued care and maintenance – on the water's edge enables ecological restoration of the waterways.



Adopt a Spot

Enabling the Ōtara community to look after their local creeks, supported by training and resources.

We can realise our vision in this generation!
Can you commit time, knowledge or resources?

For information about events and projects contact:
Ōtara Waterways and Lake Project Coordinator
katie.jones@aucklandcouncil.govt.nz

